

# New architectural possibilities with Cradle to Cradle fabric ducting

KE FIBERTEC



AIR THE WAY YOU WANT

KE Fibertec NA Inc  
2107 Emmorton Park Rd Ste 102  
Edgewood MD 21040

Ph: 443 299 6435  
info@kefibertec.com  
www.kefibertec.com



## **CradleVent®**

CradleVent® is the world's first ventilation duct to be approved as a Cradle to Cradle certified product by the prestigious EPEA Institute in Hamburg, Germany.

This certification proves the sustainability of the product and that KE Fibertec takes responsibility for its entire life cycle from cradle to cradle, i.e. from manufacturing to recycling.

The world's first  
Cradle to Cradle  
certified ventilation  
duct

## **Sustainable ventilation**

CradleVent® is our idea of a long-term and sustainable product for air distribution in offices, schools, laboratories, sports halls, public buildings, and other comfort environments.

Initially, the textile based ventilation duct will be available in white Trevira CS fabric however, more colors will follow.

Broomfield Hospital, Chelmsford, UK

## **Waste = Nutrients**

In the Cradle to Cradle concept waste is regarded as nutrients for a new production process which will balance the cycle.

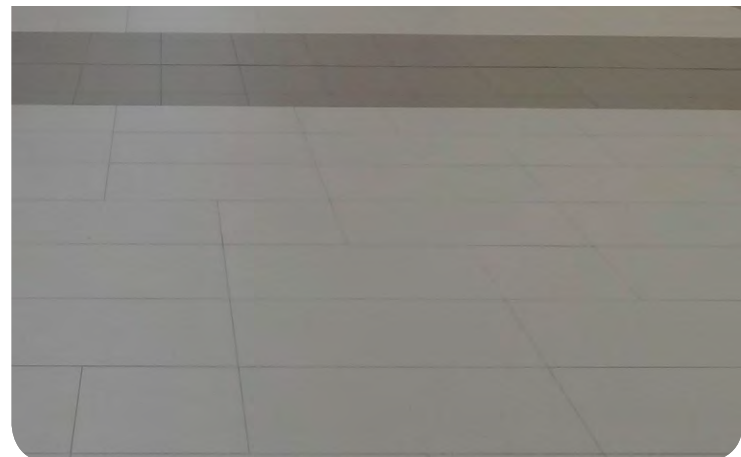
When the product is no longer usable the manufacturer takes it back for disassembly and the various parts will be recycled in another technical cycle so nothing is wasted.

Cradle to  
Cradle is proven  
sustainability

The Cradle to Cradle concept was developed by Dr Michael Braungart and William McDonough.

The concept is an optional development tool to achieve a better utilization of resources.

This results in sustainable products that are not harmful to the environment.



Broomfield Hospital, Chelmsford, UK





Birch & Baagø, Denmark

## Life cycle of CradleVent®



### **CradleVent® is useful - not harmful**

The process of becoming a Cradle to Cradle certified company has been time-consuming but it was important to take responsibility and design products that are useful and not harmful to the environment.

In order to be successful in this process, KE Fibertec has been cooperating with the furniture textile manufacturer Gabriel A/S who, in 2010, was the first company in Denmark to become Cradle to Cradle certified.

Gabriel A/S has coached and inspired KE Fibertec during our Cradle to Cradle certification process.

It is very important for KE Fibertec to be able to document the sustainability of our products which is why the Cradle to Cradle system was chosen. That is the customers' guarantee that we keep our promises.

### **Efficient and draft-free air distribution**

Textile based ventilation has many benefits. Fabric ducts are tailored to match the room's interior design and colors. Thus fabric ducts become an integrated part of the building and offer new architectural possibilities.

Fabric ducts provide efficient and draft-free air distribution and a good indoor climate. Furthermore, they are easy to transport and to install.

Design freedom  
and a good  
indoor climate

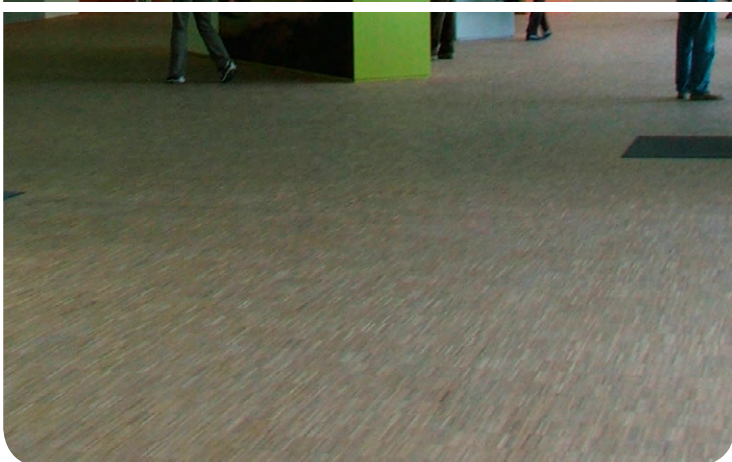
### **Washable fabric ducts save energy**

Fabric ducts are washable thus saving energy as the energy consumption in generating the required quantity of air will be reduced when the fabric duct is clean.



Stockholmsmässan, Sweden





Nasjonalmuseet, Oslo, Norway

### Benefits of fabric ducts:

- ✓ Flexible and customized solutions
- ✓ Efficient air distribution
- ✓ Unique materials and colors
- ✓ Fire approved materials
- ✓ Easy to transport and install
- ✓ Hygienic and washable
- ✓ Sustainable ventilation

Read more about  
Textile Based Ventilation  
at **kefibertec.com**



### CASE

Cradle to Cradle school ventilation in Holland  
Read more at [kefibertec.com](http://kefibertec.com)

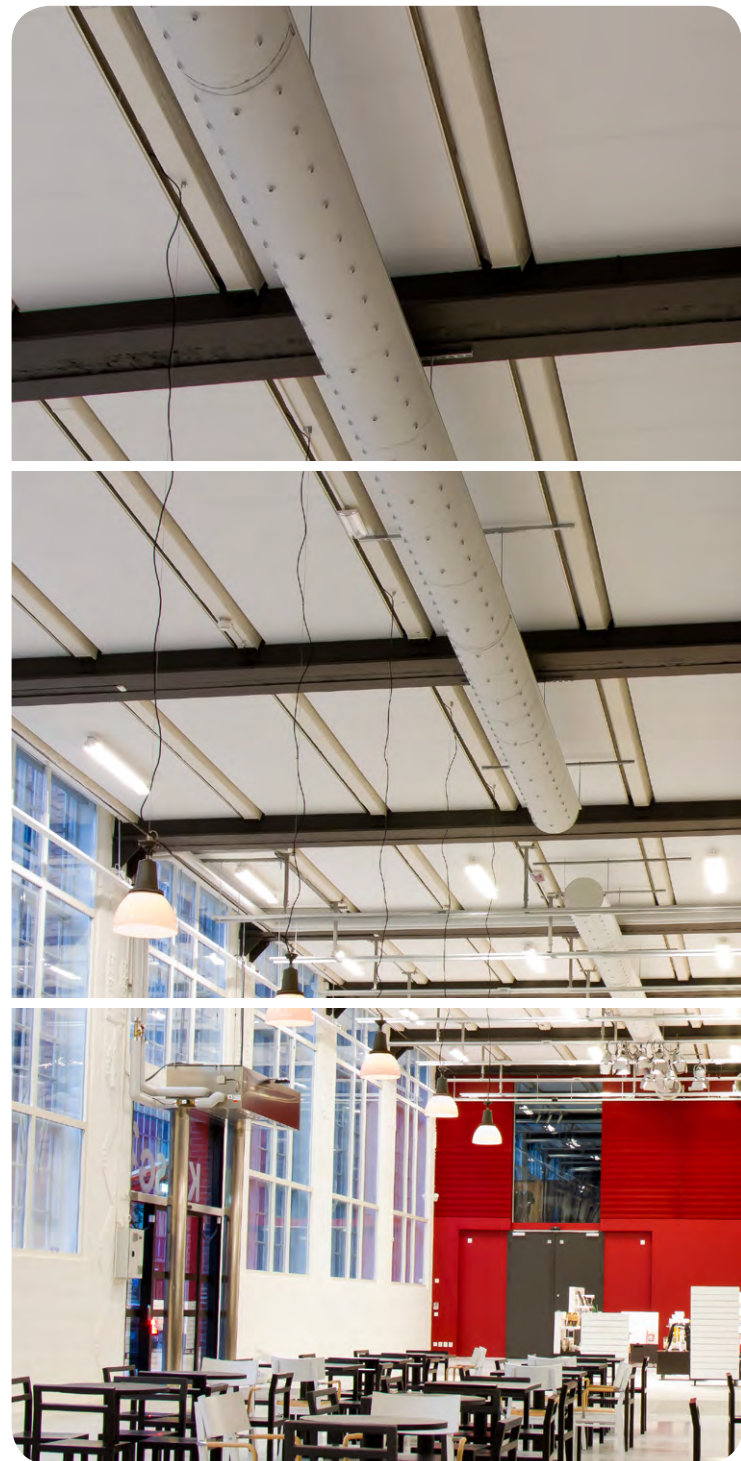
## Responsibility and sustainable ideas

KE Fibertec takes a stand on the environment and on energy. We want to cause as little harm to the environment as possible. Both in production and during transportation of our products there is a number of energy-saving initiatives in place to limit CO<sub>2</sub> emissions.

These are responsible and sustainable ideas however, showing respect for the environment is also good business.

Respect for the  
environment is  
common sense  
- and good  
business

KE Fibertec is certified in accordance with ISO 14001 (environment) and DS/OHSAS 18001 (working environment) and our products are approved in accordance with Oeko-Tex Standard 100.



Konst och Länsmuseum, Västerås, Sweden

Contact us for further  
information at 443 299 6435  
or [info@kefibertec.com](mailto:info@kefibertec.com)

KE Fibertec AS is a market leader in Textile Based Ventilation. We create good indoor climate through our tailored fabric ducts for installation in sports arenas, offices, laboratories, schools etc.

Fabric ducts are customizable, easy to install, washable, hygienic and come in all shapes and colors.

For more information please visit our website:  
[www.kefibertec.com](http://www.kefibertec.com).



Cradle to Cradle Certified<sup>CM</sup> is a certification mark of MBDC

AIR THE WAY YOU WANT



KE Fibertec NA Inc  
2107 Emmorton Park Rd Ste 102  
Edgewood MD 21040

Ph: 443 299 6435  
[info@kefibertec.com](mailto:info@kefibertec.com)  
[www.kefibertec.com](http://www.kefibertec.com)